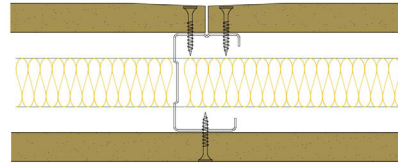


## 50-S-52(25) - SPEEDLINE System Data Sheet - Version V1 (24-10-23)

SPEEDLINE 50mm 'C' Stud Partition @600mm Ctrs,  
with Siniat GTEC 15mm Standard Board each side,  
25mm APR



### System Performance Breakdown

Fire Resistance:

BS476 Part 22:1987:

Test Ref & Date or Applied Ref & Report:

Max Height:

Thickness:

Duty Grade: BS 5234: Part 2:1992:

Sound Insulation:

**30/30 Minutes** (Integrity/Insulation).

**Chilt RF13271 - BRE Report P102396-1011C**

**Refer to Speedline Specification Clause**

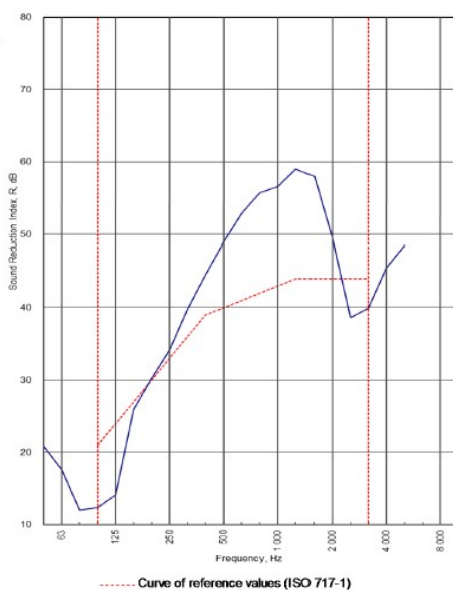
**82 mm.** (At Base Track, Excluding Finishes)

**Heavy - Annexes A-F**

**40  $R_w$ dB**, Date Tested or Assessed Against - 15/11/2013

Test Code:  
**H18525AA**  
Test Date:  
**15/11/13**

Freq. Hz	R dB
50	20.8
63	17.6
80	12.0
100	12.4
125	14.1
160	25.9
200	30.2
250	34.1
315	39.7
400	44.5
500	49.0
630	52.9
800	55.7
1 000	56.6
1 250	59.0
1 600	58.0
2 000	49.6
2 500	38.6
3 150	39.9
4 000	45.5
5 000	48.5
6 300	
8 000	
10 000	



Rating according to BS EN ISO 717-1:2013	<b><math>R_w</math> (C;Ctr) = 40 (-4;-10) dB</b>		
	Max dev. 9.9 dB at 125 Hz		
Evaluation based on laboratory measurement results obtained by an engineering method:	$C_{50-3150}$ = -4 dB	$C_{50-5000}$ = -3 dB	$C_{100-5000}$ = -3 dB
	$C_{1,50-3150}$ = -12 dB	$C_{1,50-5000}$ = -12 dB	$C_{1,100-5000}$ = -10 dB

TESTED AT ONE OF THE UKAS ACCREDITED LABORATORIES BELOW

B.T.C (H-Ref on Graph) 

B.R.E 

AIRO 

S.R.L 

Customer: Metsec plc Hepsec Division

BTC 18525A: Page 9 of 12

